

Private Letter or Public Poem? The Case of Coleridge's *Dejection: An Ode*



2017.6.28.Wed.
15:15-16:45

Dr. Heidi Thomson

Associate Professor
at Victoria University of Wellington

Sophia University
Building 2, 5F Room 508

上智大学四谷キャンパス2号館5階508教室

Free/No reservation required

入場無料/事前申し込み不要

Language: English

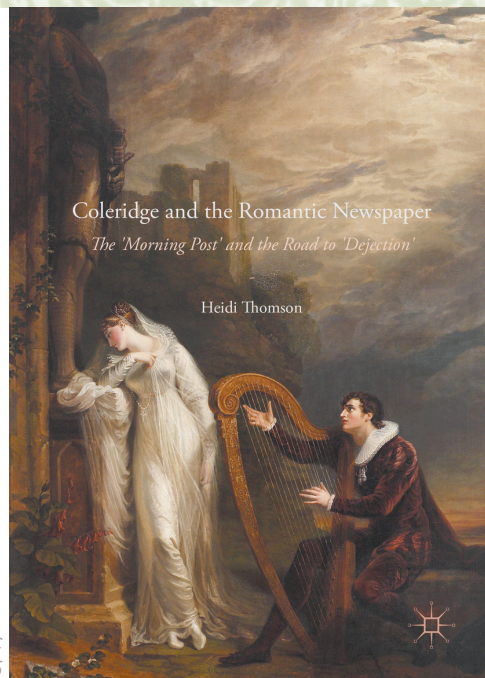
使用言語: 英語(通訳なし)

Dr Heidi Thomson, Associate Professor of English literature at Victoria University of Wellington (New Zealand), has been teaching Romantic literature since 1990.

She is currently the English Programme Director and President of the Romantic Studies Association of Australasia. Her book *Coleridge and the Romantic Newspaper: The Morning Post and the Road to Dejection* (Palgrave UK) was published in 2016.

She has published widely on the Romantic poets and has also edited Maria Edgeworth for Penguin Classics and Pickering and Chatto. Forthcoming work includes a chapter about 'Fanny Brawne and Other Women' in *John Keats in Context* (Cambridge UP) and a chapter about Keats's Meg Merrilies and other muses in *Keats's Places / Placing Keats* (Palgrave).

*Coleridge and the Romantic
Newspaper, 2016*



上智大学ヨーロッパ研究所

〒102-8554 東京都千代田区紀尾井町7-1 上智大学中央図書館7階 721 B

Tel: 03-3238-3902 E-mail: i-europe@sophia.ac.jp

共催 上智大学外国語学部英語学科